



📍 24 Pound Pill, Corsham, Wiltshire, SN13 9HX

🏠 Guide Price £500,000

Located in a sought-after location, only a short walk to The High Street, is this greatly improved and updated 1930s bay-fronted semi-detached family home in the very heart of Corsham

- Beautifully Presented Throughout 3 Bedroom Semi Detached
- Sought After Location Only Short Walk of The High Street
- Greatly Improved & Updated Throughout By Owners
- Generous Size Enclosed West Facing Rear Garden
- Newly Installed Wood Burning Stove
- Newly Installed Hard Flooring Throughout Ground Floor
- Newly Designed And Installed Ground Floor Cloakroom
- Ample Parking to The Front with Electric Charging Point
- Early Viewing Strongly Advised

🏠 Freehold

🏠 EPC Rating C



Located in a sought-after location, only a short walk to The High Street, is this greatly improved and updated 1930s bay-fronted semi-detached family home. The driveway to the house is tucked nicely behind hedges, with parking for several vehicles. This pretty house has been greatly improved and updated throughout by the owners. The hallway is a good space with room to hang coats and has a door to the dual aspect living /dining room with a large bay window to the front, and is well finished with newly installed hard flooring and a newly installed wood burner in the hearth. The rear of the property is a great social space with the dining space and doors leading out to the terrace. The kitchen breakfast room was designed and installed on behalf of the owners with a great deal of thought and plenty of space overlooking the rear garden, along with the added benefit of a downstairs cloakroom having been installed. The whole house has been carefully thought out and well decorated with a contemporary taste and style. On the first floor, the landing is roomy. At the front, there is the master bedroom with a further double bedroom to the rear, along with a further single bedroom to the front, giving plenty of room for children and guests, along with a contemporary white family bathroom. . The garden is a winner with a superb west-facing aspect. The garden has a large paved patio to the rear, giving ample space for outdoor dining. There is a generous area laid to lawn with well-stocked borders of flowers and shrubs. To the rear of the garden is a large vegetable plot with ample space to build a home office or workshop if required.

Situation

Corsham is a pretty and historic town of architectural significance located on the southern fringes of the Cotswolds, an area of outstanding natural beauty and some 8 miles North East of the fine Georgian City of Bath. The town, noted for its fine High Street, has a wealth of beautiful and historic buildings dating from the 16th Century such as the Alms House and the historic Corsham Court with its landscaped open parkland. The town caters for most day to day needs with a range of national and bespoke shops, coffee houses, boutiques, restaurants and a variety of public houses. There are very good Primary and Secondary schools and the new Corsham Leisure Centre. Communications are excellent: Bath, Bristol and Swindon are all within easy motoring distance; there are fast road links to London and the West Country via the M4 motorway (J17 and 18 approximately 15 - 20 minutes away); and main line rail services are available from either Bath or Chippenham to Bristol Temple Meads and London Paddington.

Property Information

Council Tax Band: D

Freehold

Mains Services

E.P.C Rating: D

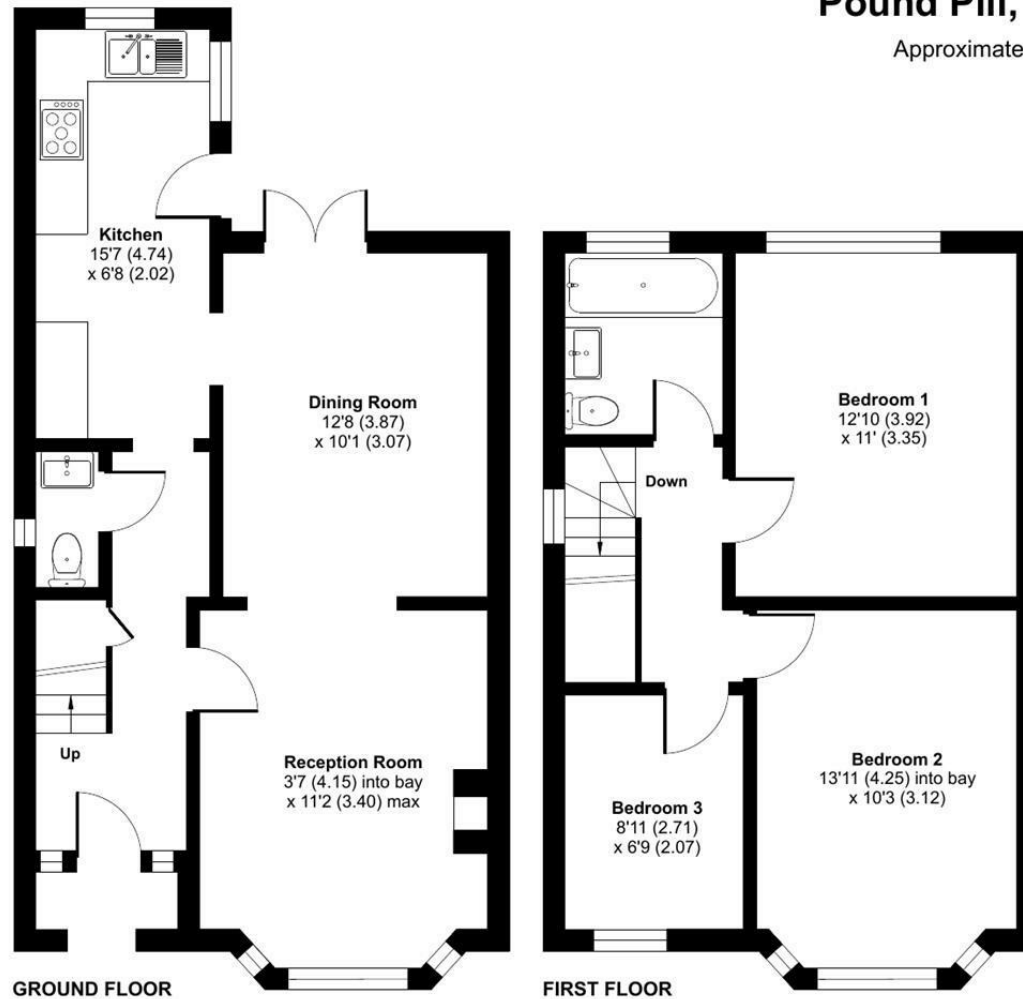
Gas Central Heating



Pound Pill, Corsham, SN13

Approximate Area = 960 sq ft / 89.1 sq m

For identification only - Not to scale



 Floor plan produced in accordance with RICS Property Measurement 2nd Edition, Incorporating International Property Measurement Standards (IPMS2 Residential). © ntechcom 2025. Produced for Strakers. REF: 1281530

Disclaimer These particulars, whilst believed to be accurate are set out as a general outline only for guidance and do not constitute any part of an offer or contract. Intending purchasers should not rely on them as statements of representation of fact, but must satisfy themselves by inspection or otherwise as to their accuracy. No person in this firm's employment has the authority to make or give any representation or warranty in respect of the property. All measurements and distances are approximate only. Your home is at risk if you do not keep up repayments on a mortgage or other loan secured on it.